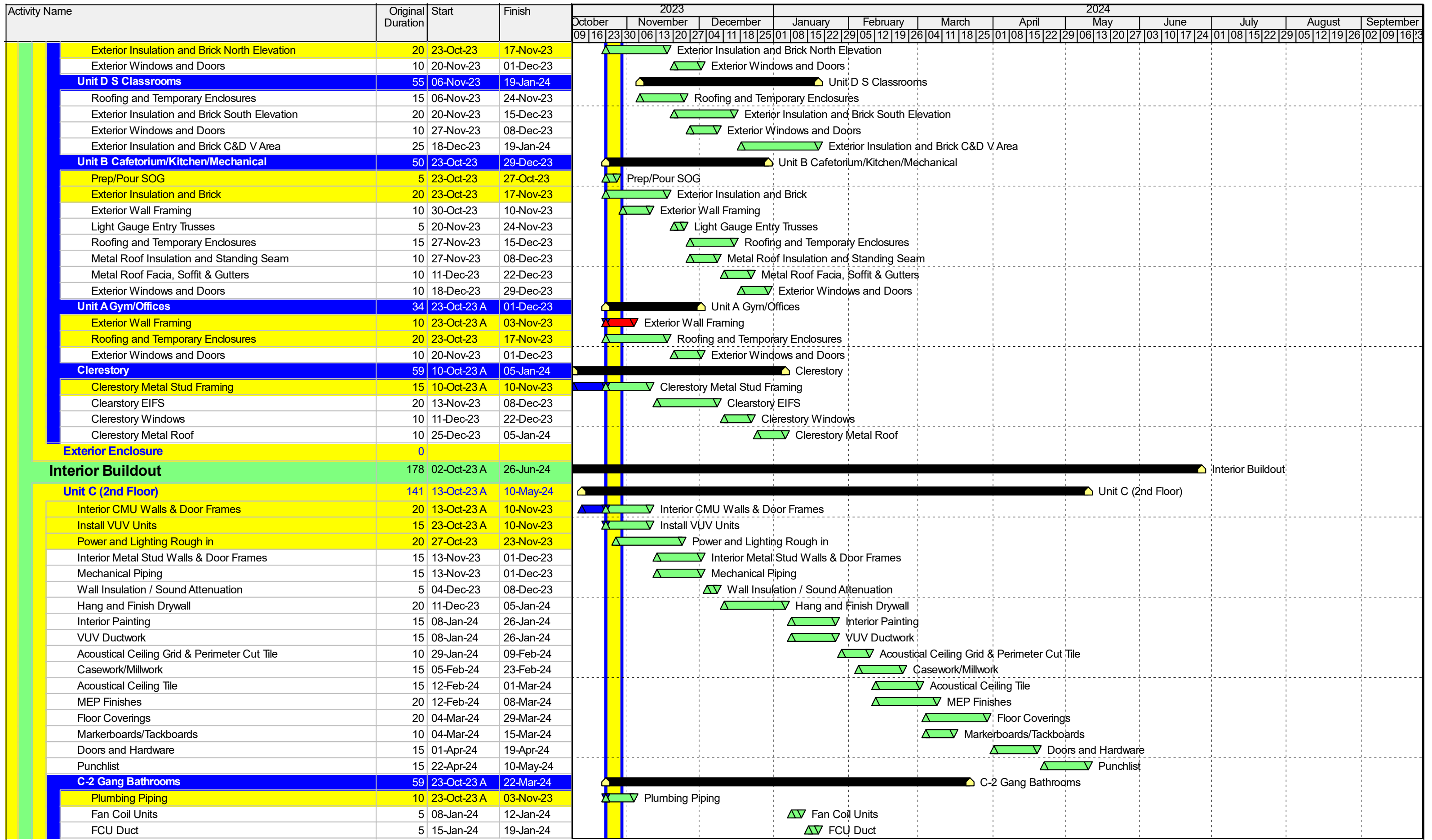


Activity Name	Original Duration	Start	Finish	2023												2024																														
				October			November			December			January			February			March			April			May			June			July			August			September									
				09	16	23	30	06	13	20	27	04	11	18	25	01	08	15	22	29	05	12	19	26	02	09	16	23	30	06	13	20	27	03	10	17	24	01	08	15	22	29	05	12	19	26
<b>Franklin Township New Elementary</b>	450	29-Sep-22 A	27-Jun-24	[Summary Bar]																																										
<b>Project Administration</b>	450	29-Sep-22 A	27-Jun-24	[Summary Bar]																																										
<b>Submittals and Shop Drawings</b>	120	29-Sep-22 A	17-Nov-23	[Summary Bar]																																										
Unit C Building Enclosure	0		10-Nov-23	[Milestone]																																										
Unit D Building Enclosure	0		24-Nov-23	[Milestone]																																										
Temporary Conditioning	0	27-Nov-23		[Milestone]																																										
Unit A Building Enclosure	0		22-Dec-23	[Milestone]																																										
Unit B Building Enclosure	0		22-Dec-23	[Milestone]																																										
Permanent Power	0	08-Jan-24		[Milestone]																																										
Permanent HVAC	0	11-Mar-24		[Milestone]																																										
Substantial Completion	0	27-Jun-24		[Milestone]																																										
<b>Sitework</b>	222	13-Jul-23 A	17-May-24	[Summary Bar]																																										
<b>North Lot &amp; North Entrance</b>	191	01-Sep-23 A	17-May-24	[Summary Bar]																																										
Site Electric	5	01-Sep-23 A	27-Oct-23	[Summary Bar]																																										
North Lot Site Storm	5	23-Oct-23	27-Oct-23	[Summary Bar]																																										
Site Lighting Bases	10	30-Oct-23	10-Nov-23	[Summary Bar]																																										
Site Lighting Poles	5	13-Nov-23	17-Nov-23	[Summary Bar]																																										
North Lot Rolled Curb	5	01-Mar-24*	07-Mar-24	[Summary Bar]																																										
North Lot Intregal Curb/Sidewalk	15	08-Mar-24	28-Mar-24	[Summary Bar]																																										
North Lot Native Seeding	5	01-May-24*	07-May-24	[Summary Bar]																																										
North Lot Asphalt Surface Course	5	06-May-24	10-May-24	[Summary Bar]																																										
North Lot Plantings	5	08-May-24	14-May-24	[Summary Bar]																																										
North Lot Striping	5	13-May-24	17-May-24	[Summary Bar]																																										
<b>South Bus Lot &amp; East Entrance</b>	212	13-Jul-23 A	03-May-24	[Summary Bar]																																										
Water Mains	36	13-Jul-23 A	27-Oct-23	[Summary Bar]																																										
Site Electric	5	23-Oct-23	27-Oct-23	[Summary Bar]																																										
AES Power To Bldg	5	23-Oct-23	27-Oct-23	[Summary Bar]																																										
Site Lighting Bases	5	30-Oct-23	03-Nov-23	[Summary Bar]																																										
AES Transformer	5	30-Oct-23	03-Nov-23	[Summary Bar]																																										
Stone	5	06-Nov-23	10-Nov-23	[Summary Bar]																																										
Masonry Screen Walls	10	20-Nov-23	01-Dec-23	[Summary Bar]																																										
Heavy Duty Concrete Paving	5	04-Dec-23	08-Dec-23	[Summary Bar]																																										
Standard Duty Concrete Paving	5	11-Dec-23	15-Dec-23	[Summary Bar]																																										
Generator	5	11-Dec-23	15-Dec-23	[Summary Bar]																																										
Rolled Curbs	5	01-Mar-24*	07-Mar-24	[Summary Bar]																																										
Intregal Curb/Sidewalk	5	08-Mar-24	14-Mar-24	[Summary Bar]																																										
Mechanical Yard Fences & Gates	5	15-Mar-24	21-Mar-24	[Summary Bar]																																										
Asphalt Base Course	5	22-Mar-24	28-Mar-24	[Summary Bar]																																										
South Lot Plantings	5	29-Mar-24	04-Apr-24	[Summary Bar]																																										
Site Lighting Poles	5	29-Mar-24	04-Apr-24	[Summary Bar]																																										
Asphalt Surface Course	5	15-Apr-24	19-Apr-24	[Summary Bar]																																										
Parking Lot Striping	5	22-Apr-24	26-Apr-24	[Summary Bar]																																										
<b>Entrance and Traffic Circle</b>	120	20-Nov-23	03-May-24	[Summary Bar]																																										
Grading	5	20-Nov-23	24-Nov-23	[Summary Bar]																																										
Cut Acel Decel Lanes	5	27-Nov-23	01-Dec-23	[Summary Bar]																																										
Monument Sign Power	5	27-Nov-23	01-Dec-23	[Summary Bar]																																										
Stone	5	04-Dec-23	08-Dec-23	[Summary Bar]																																										
Rolled Curbs	5	01-Mar-24*	07-Mar-24	[Summary Bar]																																										

Actual Work     
 Milestone  
 Remaining Work     
 Summary  
 Critical Remaining Work

Activity Name	Original Duration	Start	Finish	2023					2024							
				October	November	December	January	February	March	April	May	June	July	August	September	
				09 16 23 30	06 13 20 27	04 11 18 25	01 08 15 22 29	05 12 19 26	04 11 18 25	01 08 15 22 29	06 13 20 27	03 10 17 24	01 08 15 22 29	05 12 19 26	02 09 16 23	
Intregal Curb/Sidewalk	5	08-Mar-24	14-Mar-24							▲▲ Intregal Curb/Sidewalk						
Asphalt Base Course	5	15-Mar-24	21-Mar-24							▲▲ Asphalt Base Course						
Standard Duty Concrete Paving	5	15-Mar-24	21-Mar-24							▲▲ Standard Duty Concrete Paving						
Monument Sign Foundation	5	22-Mar-24	28-Mar-24							▲▲ Monument Sign Foundation						
Monument Sign Masonry	5	29-Mar-24	04-Apr-24							▲▲ Monument Sign Masonry						
Monument Sign Box	5	05-Apr-24	11-Apr-24							▲▲ Monument Sign Box						
Asphalt Surface Course	5	22-Apr-24	26-Apr-24								▲▲ Asphalt Surface Course					
Parking Lot Striping	5	29-Apr-24	03-May-24									▲▲ Parking Lot Striping				
<b>East Parking Lot</b>	<b>152</b>	<b>16-Oct-23 A</b>	<b>10-May-24</b>	▲ East Parking Lot												
East Lot Grading	5	16-Oct-23 A	27-Oct-23	▲▲ East Lot Grading												
Site Electric	5	30-Oct-23	03-Nov-23		▲▲ Site Electric											
Site Lighting Bases	5	06-Nov-23	10-Nov-23		▲▲ Site Lighting Bases											
East Lot Stone	5	13-Nov-23	17-Nov-23		▲▲ East Lot Stone											
East Lot Rolled Curbs	5	01-Mar-24*	07-Mar-24							▲▲ East Lot Rolled Curbs						
Intregal Curb/Sidewalk	5	08-Mar-24	14-Mar-24							▲▲ Intregal Curb/Sidewalk						
Standard Duty Concrete Paving	5	15-Mar-24	21-Mar-24							▲▲ Standard Duty Concrete Paving						
Asphalt Base Course	5	22-Mar-24	28-Mar-24							▲▲ Asphalt Base Course						
Flag Pole	5	29-Mar-24	04-Apr-24							▲▲ Flag Pole						
Site Lighting Poles	5	29-Mar-24	04-Apr-24							▲▲ Site Lighting Poles						
Asphalt Surface Course	5	29-Apr-24	03-May-24								▲▲ Asphalt Surface Course					
Parking Lot Striping	5	06-May-24	10-May-24									▲▲ Parking Lot Striping				
<b>West Site Area</b>	<b>160</b>	<b>23-Oct-23</b>	<b>31-May-24</b>	▲ West Site Area												
Standard Duty Concrete Paving	10	23-Oct-23	03-Nov-23	▲▲ Standard Duty Concrete Paving												
Site Electric	5	22-Jan-24	26-Jan-24						▲▲ Site Electric							
Site Lighting Bases	5	29-Jan-24	02-Feb-24						▲▲ Site Lighting Bases							
Site Lighting Poles	5	05-Feb-24	09-Feb-24						▲▲ Site Lighting Poles							
West Site Plantings	5	12-Feb-24	16-Feb-24						▲▲ West Site Plantings							
West Side Fencing	10	20-May-24	31-May-24											▲▲ West Side Fencing		
<b>North Playground</b>	<b>25</b>	<b>15-Apr-24</b>	<b>17-May-24</b>	▲ North Playground												
Excavate Playground Area	5	15-Apr-24	19-Apr-24											▲▲ Excavate Playground Area		
Geotex Underdrains Stone Base	5	22-Apr-24	26-Apr-24											▲▲ Geotex Underdrains Stone Base		
Playground Equipment	5	29-Apr-24	03-May-24											▲▲ Playground Equipment		
Playground Surface	5	06-May-24	10-May-24											▲▲ Playground Surface		
Engineered Wood Fiber	5	13-May-24	17-May-24											▲▲ Engineered Wood Fiber		
<b>South Playground</b>	<b>25</b>	<b>08-Apr-24</b>	<b>10-May-24</b>	▲ South Playground												
Excavate Playground Area	5	08-Apr-24	12-Apr-24											▲▲ Excavate Playground Area		
Geotex Underdrains Stone Base	5	15-Apr-24	19-Apr-24											▲▲ Geotex Underdrains Stone Base		
Playground Equipment	5	22-Apr-24	26-Apr-24											▲▲ Playground Equipment		
Playground Surface	5	29-Apr-24	03-May-24											▲▲ Playground Surface		
Engineered Wood Fiber	5	06-May-24	10-May-24											▲▲ Engineered Wood Fiber		
<b>Basketball Courts</b>	<b>15</b>	<b>01-Apr-24</b>	<b>19-Apr-24</b>	▲ Basketball Courts												
Basketball Final Grade	5	01-Apr-24*	05-Apr-24											▲▲ Basketball Final Grade		
Basketball Asphalt Subgrade and Application	5	08-Apr-24	12-Apr-24											▲▲ Basketball Asphalt Subgrade and Application		
Basketball Court Markings	5	15-Apr-24	19-Apr-24											▲▲ Basketball Court Markings		
<b>Core and Shell</b>	<b>69</b>	<b>10-Oct-23 A</b>	<b>19-Jan-24</b>	▲ Core and Shell												
<b>Superstructure</b>	<b>69</b>	<b>10-Oct-23 A</b>	<b>19-Jan-24</b>	▲ Superstructure												
<b>Unit C N Classrooms</b>	<b>30</b>	<b>23-Oct-23</b>	<b>01-Dec-23</b>	▲ Unit C N Classrooms												
Roofing and Temporary Enclosures	15	23-Oct-23	10-Nov-23	▲▲ Roofing and Temporary Enclosures												

▲ Actual Work      ◆ Milestone  
▲ Remaining Work      ▲ Summary  
▲ Critical Remaining Work



▬ Actual Work      ◆ Milestone  
▬ Remaining Work      ▬ Summary  
▬ Critical Remaining Work





Activity Name	Original Duration	Start	Finish	2023												2024																													
				October			November			December			January			February			March			April			May			June			July			August			September								
				09	16	23	30	06	13	20	27	04	11	18	25	01	08	15	22	29	05	12	19	26	02	09	16	23	30	06	13	20	27	03	10	17	24	01	08	15	22	29	05	12	19
Punchlist	15	29-Apr-24	17-May-24																																										
<b>Gang Bathrooms</b>	<b>95</b>	<b>20-Nov-23</b>	<b>29-Mar-24</b>																																										
Sanitary Piping	5	20-Nov-23	24-Nov-23																																										
Plumbing Piping	10	27-Nov-23	08-Dec-23																																										
Fan Coil Units	5	15-Jan-24	19-Jan-24																																										
FCU Duct	5	22-Jan-24	26-Jan-24																																										
Ceramic Wall Tile	10	19-Feb-24	01-Mar-24																																										
Resinous Flooring	10	04-Mar-24	15-Mar-24																																										
Plumbing Fixtures	5	18-Mar-24	22-Mar-24																																										
Toilet Partitions/Restroom Accessories	5	25-Mar-24	29-Mar-24																																										
<b>Unit D (1st Floor)</b>	<b>120</b>	<b>25-Dec-23</b>	<b>07-Jun-24</b>																																										
Interior CMU Walls & Door Frames	20	25-Dec-23	19-Jan-24																																										
Interior Metal Stud Walls & Door Frames	15	01-Jan-24	19-Jan-24																																										
Mechanical Piping	15	01-Jan-24	19-Jan-24																																										
Power and Lighting Rough in	20	08-Jan-24	02-Feb-24																																										
Wall Insulation / Sound Attenuation	5	22-Jan-24	26-Jan-24																																										
Hang and Finish Drywall	20	29-Jan-24	23-Feb-24																																										
Interior Painting	15	12-Feb-24	01-Mar-24																																										
VUV Ductwork	15	12-Feb-24	01-Mar-24																																										
Install VUV Units	15	26-Feb-24	15-Mar-24																																										
Acoustical Ceiling Grid & Perimeter Cut Tile	10	04-Mar-24	15-Mar-24																																										
Casework/Millwork	15	11-Mar-24	29-Mar-24																																										
Acoustical Ceiling Tile	15	18-Mar-24	05-Apr-24																																										
MEP Finishes	20	18-Mar-24	12-Apr-24																																										
Floor Coverings	20	01-Apr-24	26-Apr-24																																										
Markerboards/Tackboards	10	08-Apr-24	19-Apr-24																																										
Doors and Hardware	15	29-Apr-24	17-May-24																																										
Punchlist	15	20-May-24	07-Jun-24																																										
<b>Gang Bathrooms</b>	<b>63</b>	<b>22-Jan-24</b>	<b>17-Apr-24</b>																																										
Sanitary Piping	5	22-Jan-24	26-Jan-24																																										
Plumbing Piping	10	29-Jan-24	09-Feb-24																																										
Fan Coil Units	5	26-Feb-24	01-Mar-24																																										
FCU Duct	5	04-Mar-24	08-Mar-24																																										
Ceramic Wall Tile	10	07-Mar-24	20-Mar-24																																										
Resinous Flooring	10	21-Mar-24	03-Apr-24																																										
Plumbing Fixtures	5	04-Apr-24	10-Apr-24																																										
Toilet Partitions/Restroom Accessories	5	11-Apr-24	17-Apr-24																																										
<b>Unit A &amp; B (2nd Floor)</b>	<b>140</b>	<b>23-Oct-23</b>	<b>03-May-24</b>																																										
Interior CMU Walls & Door Frames	10	23-Oct-23	03-Nov-23																																										
Interior Metal Stud Walls & Door Frames	15	06-Nov-23	24-Nov-23																																										
MEP In-Wall Rough-In	20	06-Nov-23	01-Dec-23																																										
MEP Overhead Rough-In	20	04-Dec-23	29-Dec-23																																										
Wall Insulation / Sound Attenuation	5	01-Jan-24	05-Jan-24																																										
Hang and Finish Drywall	15	08-Jan-24	26-Jan-24																																										
Interior Painting	15	29-Jan-24	16-Feb-24																																										
Install VUV Units	5	29-Jan-24	02-Feb-24																																										
Acoustical Ceiling Grid & Perimeter Cut Tile	10	19-Feb-24	01-Mar-24																																										
MEP Finishes	15	19-Feb-24	08-Mar-24																																										
Acoustical Ceiling Tile	5	04-Mar-24	08-Mar-24																																										

Actual Work      Milestone  
 Remaining Work      Summary  
 Critical Remaining Work



