

# COVID-19 Screening Decision Tree

## For Use by School Personnel

Student or staff member complains of COVID-19 or MIS-C symptoms.

Call 9-1-1 (EMS) if any the following symptoms are exhibited

+Difficulty or Rapid Breathing  
+Pulse O<sub>2</sub> <92%  
+Bluish Lips/Face

+Persistent pain or pressure in the chest  
+New Confusion  
+Unable to wake or stay awake

NO



Mask student or staff member

Place student in isolation area away from others



Staff should go home immediately and consult a healthcare provider.

Questions to ask:

1. When did your symptoms appear?
2. What are your signs and symptoms? *(see list on back)*
3. Have you been within 6 ft. of someone who has tested positive for COVID-19 for 15 min. or more?

Verbal, Visual, & Physical concerns out of range?

NO

Allow to rest for 10 minutes

Improving? NO

YES

Back to Class

YES

+Isolate  
+Send home ASAP  
+Contact Medical Provider  
+Contact Public Health

FOLLOW-UP WITH

+Student/family  
+Health Services  
+Administrator

# Symptoms of COVID-19

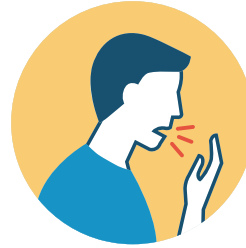


**FEVER 100.4\* OR CHILLS**

\*or school board policy if threshold is lower



**SORE THROAT**



**COUGH\* OR SHORTNESS OF BREATH**

\*especially new onset, uncontrolled cough



**DIARRHEA, NAUSEA OR VOMITING**



**HEADACHE\***

\*particularly new onset of severe headache, especially with fever



**NEW LOSS OF TASTE OR SMELL**



**MUSCLE OR BODY ACHES OR FATIGUE**

*\*May present with more than one symptom. This list does not include all possible symptoms.*

**Look for emergency warning signs\* for COVID-19. If someone is showing any of these signs, seek emergency medical care immediately**

\*Difficulty or rapid breathing

\*Persistent pain or pressure in the chest

\*New confusion

\*Inability to wake or stay awake

\*Bluish lips or face

\*Pulse O<sub>2</sub> < 92%

*\*This list is not all possible symptoms. Please call your medical provider for any other symptoms that are severe or concerning to you.*

**Call 911 or call ahead to your local emergency facility:  
Notify the operator that you are seeking care for someone who has  
or may have COVID-19.**

## Symptoms of MIS-C

\*Rash

\*Red Eyes

\*Cracked/Swollen Lips

\*Red/Swollen Tongue

\*Swelling Hands/Feet

\*Stomach Pain