

COVID-19 Screening Decision Tree

For Use by School Personnel

Student or staff member complains of COVID-19 or MIS-C symptoms.

Call 9-1-1 (EMS) if any the following symptoms are exhibited

- +Difficulty or Rapid Breathing
- +Pulse O₂ <92%
- +Bluish Lips/Face

- +Persistent pain or pressure in the chest
- +New Confusion
- +Unable to wake or stay awake

NO



Mask student or staff member

Place student in isolation area away from others



Staff should go home immediately and consult a healthcare provider.

Questions to ask:

1. When did your symptoms appear?
2. What are your signs and symptoms? *(see list on back)*
3. Have you been within 6 ft. of someone who has tested positive for COVID-19 for 15 min. or more?

Verbal, Visual, & Physical concerns out of range?

NO

Allow to rest for 10 minutes

Improving? NO

YES

Back to Class

YES

- +Isolate
- +Send home ASAP
- +Contact Medical Provider
- +Contact Public Health

FOLLOW-UP WITH

- +Student/family
- +Health Services
- +Administrator

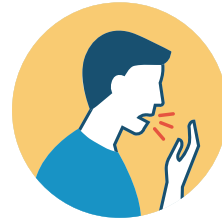
Symptoms of COVID-19



FEVER 100.4* OR CHILLS
*or school board policy
if threshold is lower



SORE THROAT



**COUGH* OR SHORTNESS
OF BREATH**
*especially new onset,
uncontrolled cough



**DIARRHEA, NAUSEA OR
VOMITING, ABDOMINAL PAIN**



HEADACHE*
*particularly new onset of severe
headache, especially with fever



**NEW LOSS OF TASTE
OR SMELL**

**May present with more than one symptom. This list does not include all possible symptoms.*

Look for emergency warning signs* for COVID-19. If someone is showing any of these signs, seek emergency medical care immediately

***Difficulty or rapid breathing**

***Persistent pain or pressure in the chest**

***New confusion**

***Inability to wake or stay awake**

***Bluish lips or face**

***Pulse O₂ < 92%**

**This list is not all possible symptoms. Please call your medical provider for any other symptoms that are severe or concerning to you.*

**Call 911 or call ahead to your local emergency facility:
Notify the operator that you are seeking care for someone who has
or may have COVID-19.**

Symptoms of MIS-C

***Rash**

***Red Eyes**

***Cracked/Swollen Lips**

***Red/Swollen Tongue**

***Swelling Hands/Feet**

***Stomach Pain**